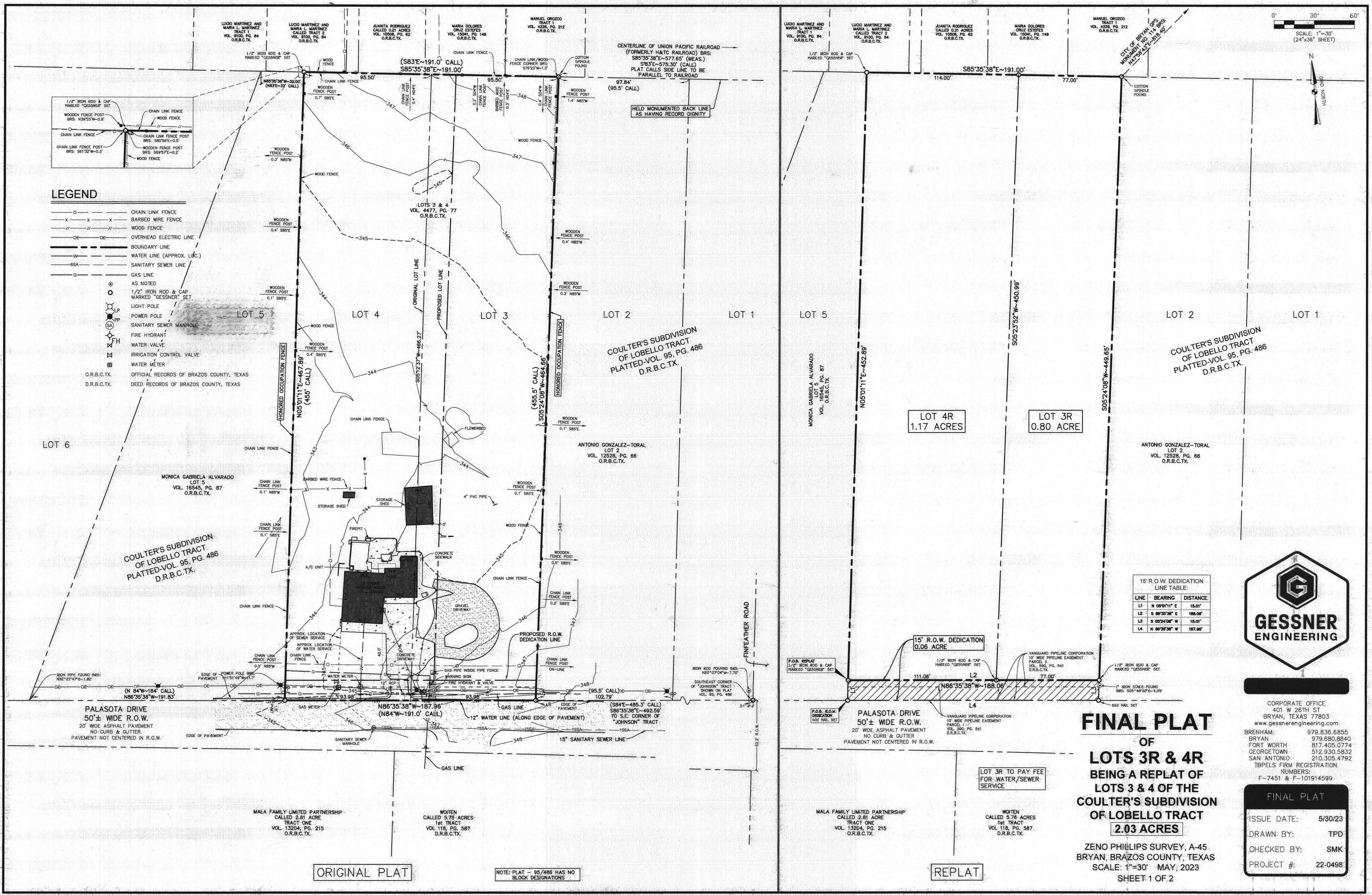


LEGEND

- CHAIN LINK FENCE
- ×××× BARBED WIRE FENCE
- WOOD FENCE
- OVERHEAD ELECTRIC LINE
- BOUNDARY LINE
- WATER LINE (APPROX. L.C.)
- SANITARY SEWER LINE
- GAS LINE
- AS NOTED
- 1/2" IRON ROD & CAP MARKED "GESSNER" SET
- LIGHT POLE
- POWER POLE
- SANITARY SEWER MANHOLE
- FIRE HYDRANT
- WATER VALVE
- IRRIGATION CONTROL VALVE
- WATER METER
- OFFICIAL RECORDS OF BRAZOS COUNTY, TEXAS
- DEED RECORDS OF BRAZOS COUNTY, TEXAS



15' R.O.W. DEDICATION LINE TABLE:

LINE	BEARING	DISTANCE
L1	N 05°01'11" E	15.01'
L2	S 88°35'38" E	188.06'
L3	S 05°24'08" W	15.01'
L4	N 88°35'38" W	187.66'



CORPORATE OFFICE
401 W 26TH ST
BRYAN, TEXAS 77803
www.gessnerengineering.com

BREHAM: 979.836.6855
BRYAN: 979.680.8840
FORT WORTH: 817.405.0774
GEORGETOWN: 512.930.5832
SAN ANTONIO: 210.305.4792
TBPELS FIRM REGISTRATION NUMBERS:
F-7451 & F-101914599

FINAL PLAT
OF
LOTS 3R & 4R
BEING A REPLAT OF
LOTS 3 & 4 OF THE
COULTER'S SUBDIVISION
OF LOBELLO TRACT
2.03 ACRES

ZENO PHILLIPS SURVEY, A-45
BRYAN, BRAZOS COUNTY, TEXAS
SCALE: 1"=30' MAY, 2023
SHEET 1 OF 2

FINAL PLAT

ISSUE DATE:	5/30/23
DRAWN BY:	TPD
CHECKED BY:	SMK
PROJECT #:	22-0498

ORIGINAL PLAT

REPLAT

NOTE: PLAT - 95/486 HAS NO BLOCK DESIGNATIONS

